

Bartram & Co



Flat 5, Lawers Court 1 Columbia Place, Campbell Park, MK9 4BE

Asking Price £199,950 - Leasehold

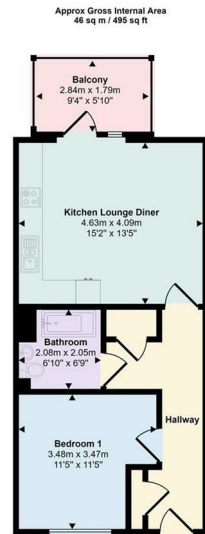
 1  1  1  B
Council Tax Band: B Service Charge: x Ground Rent: x

- Balcony
- Open Plan Living
- No Upper Chain
- Secure underground parking space
- One Bedroom Apartment
- City Center Location
- Epc Energy Rating : B

Bartram & Co are pleased to present this one bedroom first floor apartment located in Campbell Park, situated in Central Milton Keynes offering close proximity to the central shopping district, restaurants, bars and all local amenities.

THE PROPERTY

Bartram & Co are pleased to present this one bedroom first floor apartment located in Campbell Park, situated in Central Milton Keynes offering close proximity to the central shopping district, restaurants, bars and all local amenities.



Floorplan

This floorplan is only for illustrative purposes and is not to scale. Measurements of rooms, doors, windows, and any items are approximate and no responsibility is taken for any error, omission or mis-statement. Icons of items such as bathroom suites are representations only and may not look like the real items. Made with Made Snappy 360.

SITUATION

Directions